

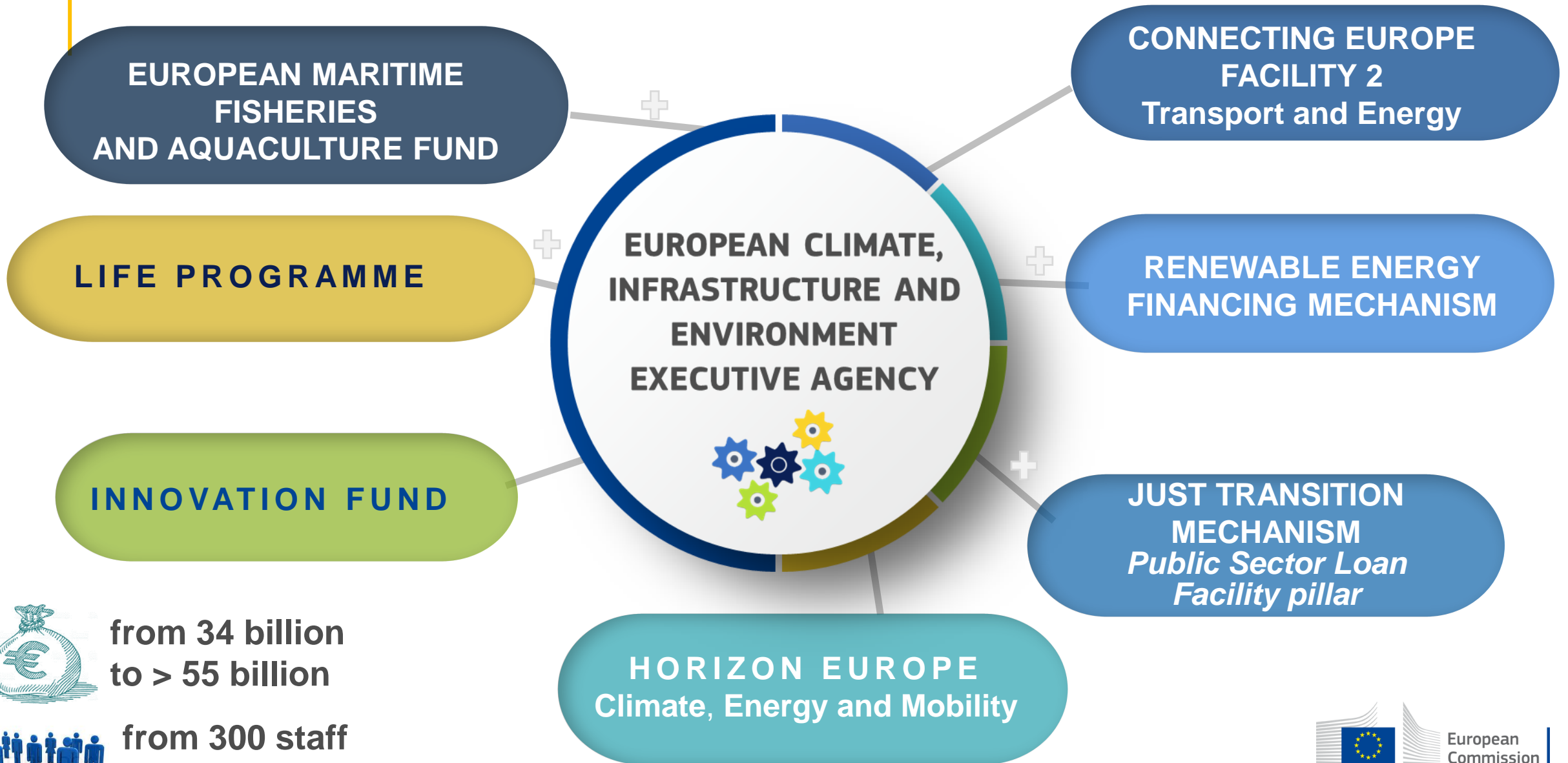


SUSTAINABLE & SMART MOBILITY STRATEGY

Connecting Europe Facility Transport Calls 2021



CINEA's key contribution to the European Green Deal



from 34 billion
to > 55 billion



from 300 staff
to > 500 in 2027

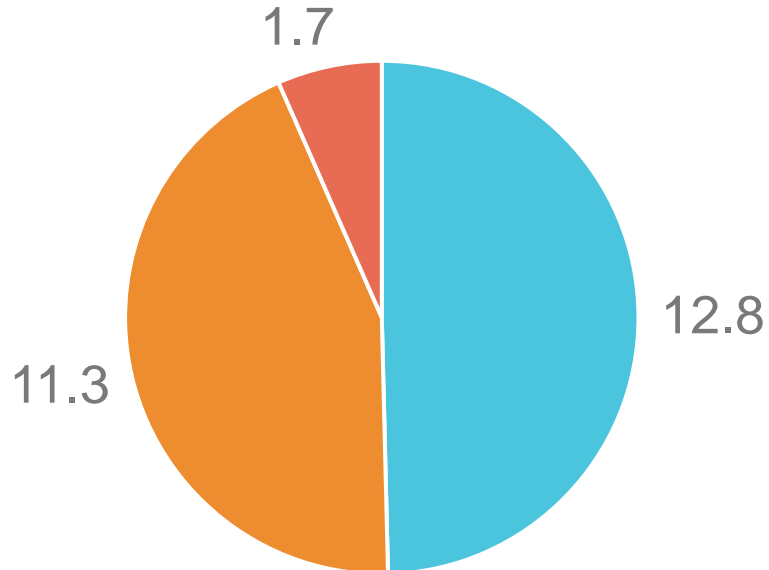
CEF Transport 2014 - 2020 Overview

- A portfolio of more than 1000 Actions
- Comprising an EU contribution of more than €23 billion
- For a total investment of more than €50 billion



CEF policy objectives

CEF budget 2021-2027
€ 25,8 billion



■ General envelope ■ Cohesion envelope
■ MilMob envelope

- Contribute to the objectives of the **Green Deal** and the **Sustainable and Smart Mobility Strategy**
- Contribute to the development of the **TEN-T**, including adaptation of parts of it for the civilian-defence dual use
- At least **60%** of the financial envelope will be dedicated to the **Union's climate targets**

CEF work programme 2021-2023

€ 18,2 billion

Frontloading:

70% of the CEF budget
to be allocated in the period
2021-2023 through →

- **3 calls for proposals of € 5.5 billion** each in 2021, 2022 and 2023
- A 3-year rolling call for the **Alternative Fuel Infrastructure Facility of € 1.5 billion** (5 deadlines, every 6 months)
- **€ 200 million for technical assistance actions**

Indicative allocations

1. Completion of the TEN-T network

General envelope 60%

Cohesion envelope 85%

85% - Core network

15% - Comprehensive network specific sections

2. Modernisation of existing TEN-T network

General envelope 40%

Cohesion envelope 15%

Overview calls

CEF Programme structure			General envelope	Cohesion envelope
Completion of the TEN-T network	Projects on the Core Network		CEF-T-2021-COREGEN (8 topics) Indicative budget €1,62 billion	CEF-T-2021-CORECOEN (8 topics) Indicative budget €2 billion
	Projects on the Comprehensive Network		CEF-T-2021-COMPGEN (8 topics) Indicative budget €250 million	CEF-T-2021-COMPCOEN (8 topics) Indicative budget €350 million
Modernisation of the TEN-T network	Actions related to smart and interoperable mobility		CEF-T-2021-SIMOBGEN (19 topics) Indicative budget €400 million	CEF-T-2021-SIMOBEOEN (1 topic) Indicative budget €150 million
	Actions related to sustainable and multimodal mobility	AFIF	CEF-T-2021-AFIFGEN (3 topics) Indicative budget €1,2 billion	CEF-T-2021-AFIFEOEN (3 topics) Indicative budget €375 million
		Other	CEF-T-2021-SUSTMOBGEN (5 topics) Indicative budget €100 million	CEF-T-2021-SUSTMOBEOEN (2 topics) Indicative budget €25 million
	Actions related to safe and secure mobility		CEF-T-2021-SAFEMOBGEN (5 topics) Indicative budget €100 million	CEF-T-2021-SAFEMOBEOEN (5 topics) Indicative budget €150 million
Civilian-defence dual-use (Military Mobility envelope)			CEF-T-2021-MILMOB (2 topics) Indicative budget €330 million	

Call/topic matrix on CINEA's website

https://cinea.ec.europa.eu/calls-proposals/2021-cef-transport-call-proposals_en

PAGE CONTENTS

A list of national contact points for CEF Transport is available for potential applicants.

Call matrix

Projects on the Core Network

Envelope General (€1.62 billion)		Cohesion (€2 billion)			
ID	COREGEN	CORECOEN		CORECOEN	
	Rail - studies	Rail - works (mixed)	Maritime ports - studies	Rail - studies	Rail - works (mixed)
	Maritime ports - works (mixed)	Inland waterways and ports - studies	Inland waterways and ports - works (mixed)	Maritime ports - works (mixed)	Inland waterways and ports - studies
Topics	Roads, rail-road terminals and multimodal logistics platforms - studies	Roads, rail-road terminals and multimodal logistics platforms - works (mixed)		Roads, rail-road terminals and multimodal logistics platforms - studies	Roads, rail-road terminals and multimodal logistics platforms - works (mixed)

Projects on the Comprehensive Network

Envelope General (€250 million)		Cohesion (€350 million)			
ID	COMPGEN	COMPGEN		COMPGEN	
	Rail - studies	Rail - works (mixed)	Maritime ports - studies	Rail - studies	Rail - works (mixed)
	Maritime ports - works (mixed)	Inland waterways and ports - studies	Inland waterways and ports - works (mixed)	Maritime ports - works (mixed)	Inland waterways and ports - studies
Topics	Roads, rail-road terminals and multimodal logistics platforms - studies	Roads, rail-road terminals and multimodal logistics platforms - works (mixed)		Roads, rail-road terminals and multimodal logistics platforms - studies	Roads, rail-road terminals and multimodal logistics platforms - works (mixed)

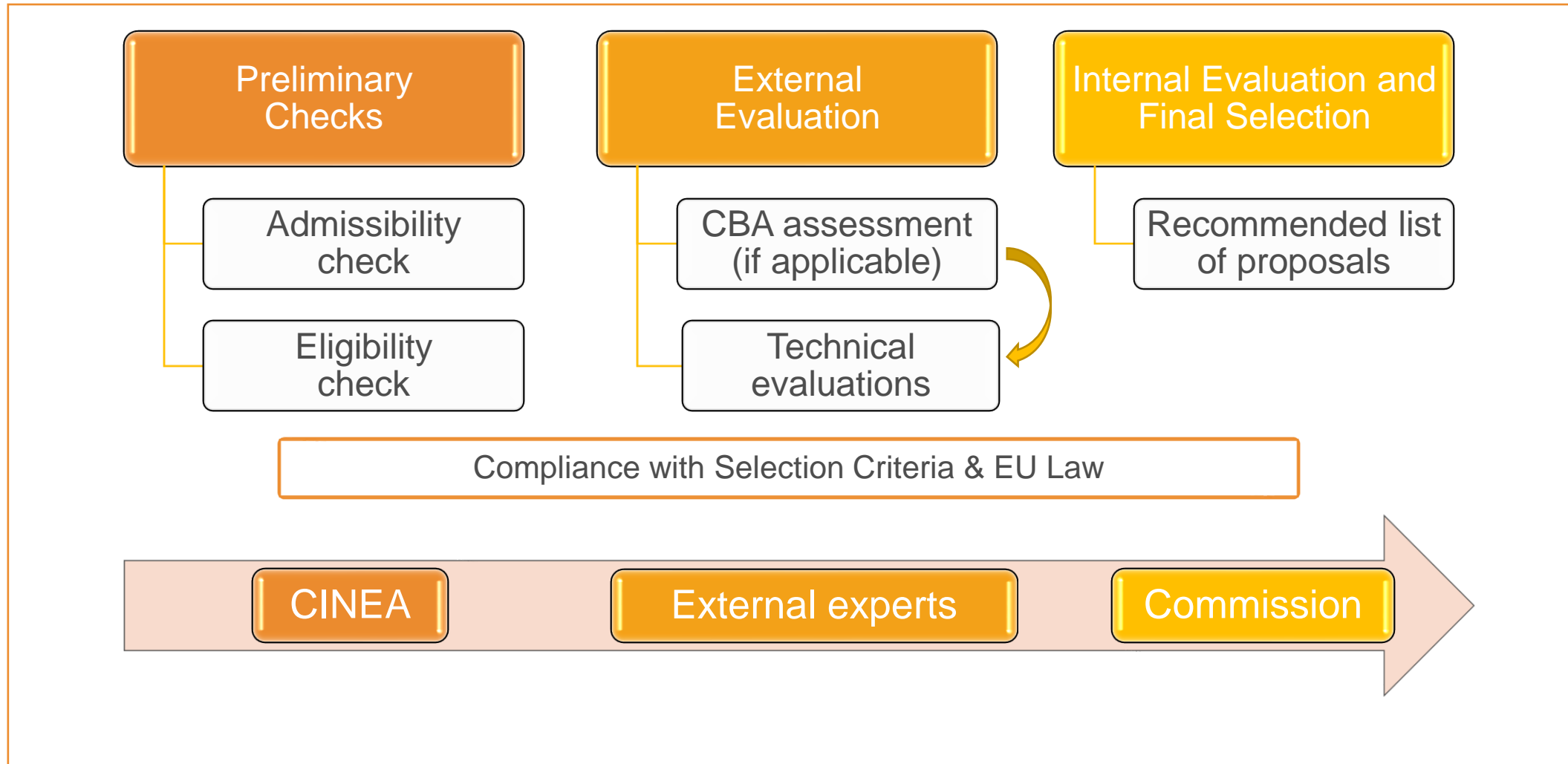
Smart and interoperable mobility

Envelope General (€400 million)		Cohesion (€150 million)	
ID	SIMOBGEN	SIMOBGEN	
	ERTMS		ERTMS
	ITS - studies	ITS - works (mixed)	SESAR-DSDIU

Call indicative timeline

Call publication	16 September 2021
Deadline for submission	19 January 2022 (17:00:00 Brussels time)
Evaluation of proposals	February – April 2022
Consultation of CEF Coordination Committee Information of European Parliament	May 2022
Adoption of Selection Decision	June 2022
Information to applicants	June 2022
Time To Grant	By 20 October 2022

Principles for the evaluation and selection process



Award criteria 1/2

- **Priority and urgency**: evaluating the **correspondence** of the proposal with the sectoral policy objectives and priorities, measuring its **EU added-value** and where applicable assessing the possible synergies with other sectors; (5 points)
- **Maturity**: assessing the **maturity** of the action in the project development. The criterion will measure, among others: i) the **readiness/ability** of the project to start by the proposed start date and to **complete** by the proposed end date, ii) the **status** of the contracting procedures and of the necessary permits, and iii) information on the **financial availability** needed to complement the CEF investment; (5 points)
- **Quality**: evaluating the **soundness** of the implementation plan proposed, both from the technical and financial point of view, the architecture and design approach, the organisational **structures** put in place (or foreseen) for the implementation, the risk analysis, the control procedures and quality management and the **communication** strategy of the applicant. Moreover, when applicable, it will also assess the information related to the maintenance strategy proposed for the completed project; (5 points)

Award criteria 2/2

- **Impact**: assessing, when applicable, **the economic, social and environmental impact, including the climate impact, and other relevant externalities**. This criterion may be substantiated by a Cost Benefit Analysis (**CBA**) or, in the absence of such tools, other forecast of end-user take-up, in which case the evaluation will look at the soundness, comprehensiveness, and transparency of the analysis as well as proposed means to monitor its impact. **Moreover**, when applicable, the criterion will assess, among others, the innovation and digitalisation, safety and interoperability and accessibility aspects of the proposal, as well as its **cross-border dimension, effect/contribution to the network** territorial accessibility; (5 points)
- **Catalytic effect**: evaluating the financial gap (for instance the need to overcome financial obstacles generated by insufficient commercial viability, high upfront costs or the lack of market finance), the capacity to mobilise different investments sources, the capacity to trigger important overall investments with limited EU support and when appropriate the extent to which externalities justify the CEF financial support. It shall assess the **catalytic effect of the EU financial support** and determine whenever possible the actual co-funding rate to be granted. (5 points)

To note 1/2

- Read carefully the workprogramme, call text, etc.
 - Contact Member State early to seek their agreement (and advice)
 - Part B: Page restriction of 120 pages (exceeding pages are cut)
 - Some changes in terminology, e.g. action/project
- To facilitate the evaluation provide the requested information (where it is requested) in a clear, factual and concise manner
 - Ask somebody to review the application
- Deliverables and milestones: Continuous reporting

To note 2/2

- Timing and duration
 - Costs under calls 2021 can be eligible from 1 January 2021
 - Duration of actions: 2/3 years for studies and 4/5 years for works or mixed, max. until 31 December 2026
- Applications including works and for which an EIA is mandatory:
 - By the date of application, key steps of the EIA have to be completed: an EIA report prepared by the project promoter and consultations carried out under the EIA directive. Development consent procedure may be completed after the submission of the application.

CBA Requirement

- The requirement for socio economic assessment has been streamlined in this programming period to take account of the added value of the tool for each priority
- There are now three levels of granularity of information
 - Full CBA
 - Simplified CBA
 - For some categories no CBA is required
- No more Cost Effectiveness Analysis (CEA)

* The threshold applies to eligible costs

CBA requirement by priority

Work programme “Objectives”	Priorities	Requirement
6.1 Projects related to the efficient, interconnected, interoperable and multimodal networks		
	Railways	Full CBA / Simplified < 10 m€ *
	Inland waterways and inland ports	Full CBA / Simplified < 10 m€ *
	Maritime ports	Full CBA / Simplified < 10 m€ *
	Roads, rail-road terminals, connections to airports and multimodal logistics platforms	Full CBA / Simplified < 10 m€ *
6.2 Projects relating to smart, interoperable, sustainable, multimodal, inclusive, accessible, safe and secure mobility		
6.2.1 Projects related to smart and interoperable mobility	ERTMS	No CBA
	ITS	No CBA
	RIS	No CBA
	SESAR common projects	No CBA
	SESAR other projects	No CBA
	Transport interoperability	No CBA
6.2.2 Projects related to sustainable and multimodal mobility	Alternative fuels infrastructure	Implementing Partner: No CBA Others: Simplified CBA
	Motorways of the Seas	Full CBA / Simplified < 10 m€ *
	Multimodal passenger hubs	Full CBA / Simplified < 10 m€ *
	Reduction of rail freight noise	No CBA
6.2.3 Projects related to safe and secure mobility	Safe and secure parking infrastructure	Full CBA / Simplified < 10 m€ *
	Road safety	Full CBA / Simplified < 10 m€ *
	Projects improving transport infrastructure resilience	Full CBA / Simplified < 10 m€ *
	External border checks	Full CBA / Simplified < 10 m€ *
6.3 Military mobility		
	Military mobility	No CBA

Budget requirements for proposals

I) Detailed budget breakdown cost category - works

Application forms

Proposal ID **SEP-210784515**

Acronym ██████████

3 - Budget

If your proposal fulfils the criteria specified in the call documents, you can select below a different reimbursement rate (the standard rate is selected by default):

50% Funding Rate

30% Funding Rate

50% Funding rate for cross border links

55% Funding rate for cross border links with integrated management

85% Funding rate for railway links between cohesion countries

90% Funding rate for railway links between cohesion countries with integrated management

No.	Name of beneficiary	Country	Role	Personnel costs - without volunteers /EUR	Subcontracting costs/EUR	Purchase costs - Travel and subsistence/ EUR	Purchase costs - Equipment/ EUR	Purchase costs - Other goods, works and services/ EUR	Financial support to third parties/ EUR	Studies/ EUR	Synergetic elements/ EUR	Works in outermost regions/ EUR	Land purchases/ EUR	Indirect costs/EUR	Total eligible costs/EUR	Ineligible costs/EUR	Total estimated project costs and contributions/ EUR	Funding rate	Maximum EU contribution on to eligible costs/EUR	Requested EU contribution on to eligible costs/EUR	Max grant amount/ EUR	Income generated by the project/ EUR	In kind contributions/ EUR	Financial contributions/ EUR	Own resources/ EUR	Total estimated project income/ EUR	
										Special Funding rate	Special Funding rate																
1	Charalampos Xenogiannis	BE	Coordinator											0,00	0,00	0	0	50	0,00		0,00		0	0	0	0	0,00
Total				0	0	0	0	0	0	0	0	0	0	0,00	0,00	0	0	50	0,00	0,00	0,00	0	0	0	0	0,00	

Possible higher funding rate for (only) works under certain conditions

Cost category D.3 allows to extend the base of eligible cost to elements of other CEF sector, same funding rate as other cost categories

Cost category D.4: Costs in this category have a dedicated funding rate

Cost category D.5: Land purchase only eligible under cohesion calls



Budget requirements for proposals

II) Detailed budget table per work package

- Encoded in an Excel file available for download and to be uploaded after completion (unstructured financial information)
- No differentiation per cost category whatsoever.
- Based on costs per work package and allows encoding a different funding rate per work package.
- To be encoded as totals per work package and per applicant (several applicants per work package are possible) and per reporting period.
- Calculates the totals per work package and per participants for each reporting period

Thank you