

Industry lead logistics innovation for a more competitive and sustainable industry

The European Technology Platform ALICE

alice

Alliance for
Logistics Innovation
through Collaboration
in Europe



Content

1. Who is ALICE?
2. The vision for ALICE organization
3. ALICE ambition: Support transition to zero emissions logistics in an affordable way
4. Overall structure & activities
5. ALICE value for members
6. How to join

*Acceleration of logistics
decarbonization in
affordable and
competitive way*



Alliance for Logistics Innovation through Collaboration in Europe

not-for-profit association based in Brussels. Created in 2014

Recognized by the European Commission as a *European Technology Platform*¹

1. European Technology Platforms, ETPs are industry-led stakeholder fora that develop short to long-term research and innovation agendas and roadmaps for action at EU and national level to be supported by both private and public funding. More Info on ETPs http://www.etp-logistics.eu/wp-content/uploads/2021/03/Logistic-TP-recognition-SWD_2013_272_F1_STAFF_WORKING_PAPER_EN_V2_P1_735480.pdf

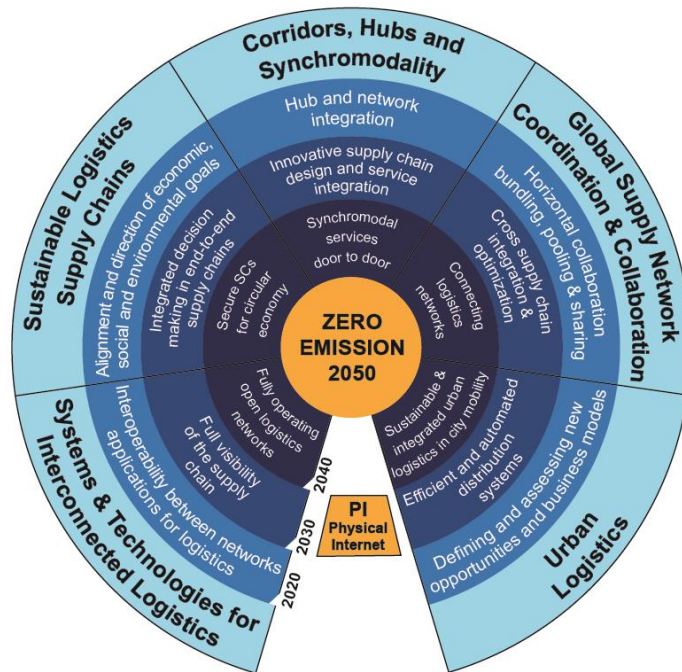
European leading companies and experts implementing logistics and supply chain innovation



ALICE membership bringing an holistic approach → All key logistics stakeholders represented!

Type of Organization	Members	EU/International Associations
Shippers & Retail		
Logistics Service Providers, Carriers, Courier and Postal operators, Freight Forwarders & Shipping		
Ports, Hubs, Real Estate companies, Intermodal terminals & Transport/Energy Infrastructure		
Transport and industry vehicles, packaging & material handling		
Information and Communication Technologies & Consultancy		
Regional & National Logistics Clusters & Associations		
Research and technology Centers		
European Technology Platforms / PPPs		
Member States and innovation Funding*		

*Involved in ALICE Mirror Group

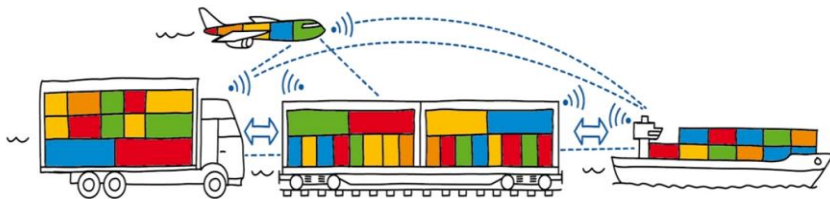


ALICE VISION: freight transport and logistics is climate neutral and zero emission. Physical Internet paves the way to achieve this transition in an affordable and competitive way

- **Physical Internet (PI)** enables seamless access to resources and assets in interconnected logistics networks
- Enable companies to seamlessly consolidate flows and increase assets utilization and sharing.
- PI is about transport, storage and physical handling.
- It aims to deliver opportunities for **efficiency, resilience and agility**
- PI concepts can deliver results in the critical next 10 years

THE PHYSICAL INTERNET

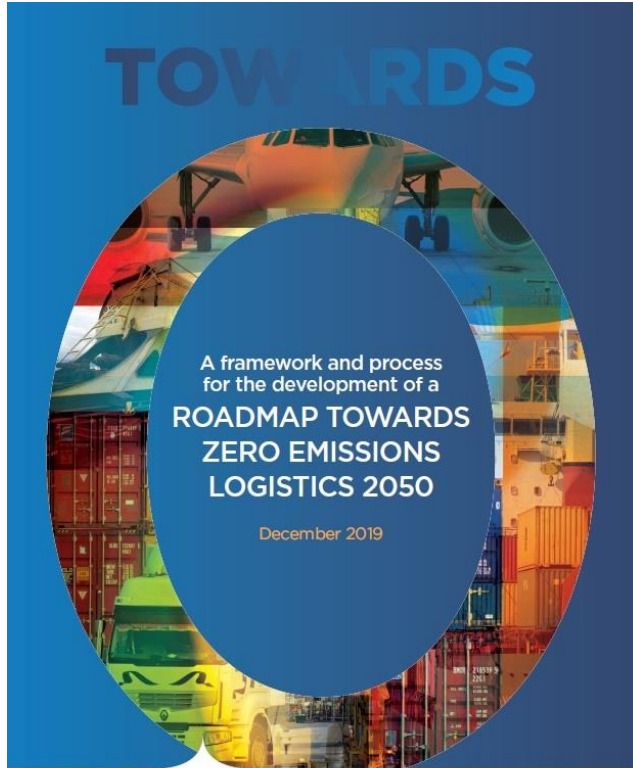
Interconnected logistics networks, sharing assets and capabilities



ALICE Roadmap Towards Zero Emissions Logistics

alice

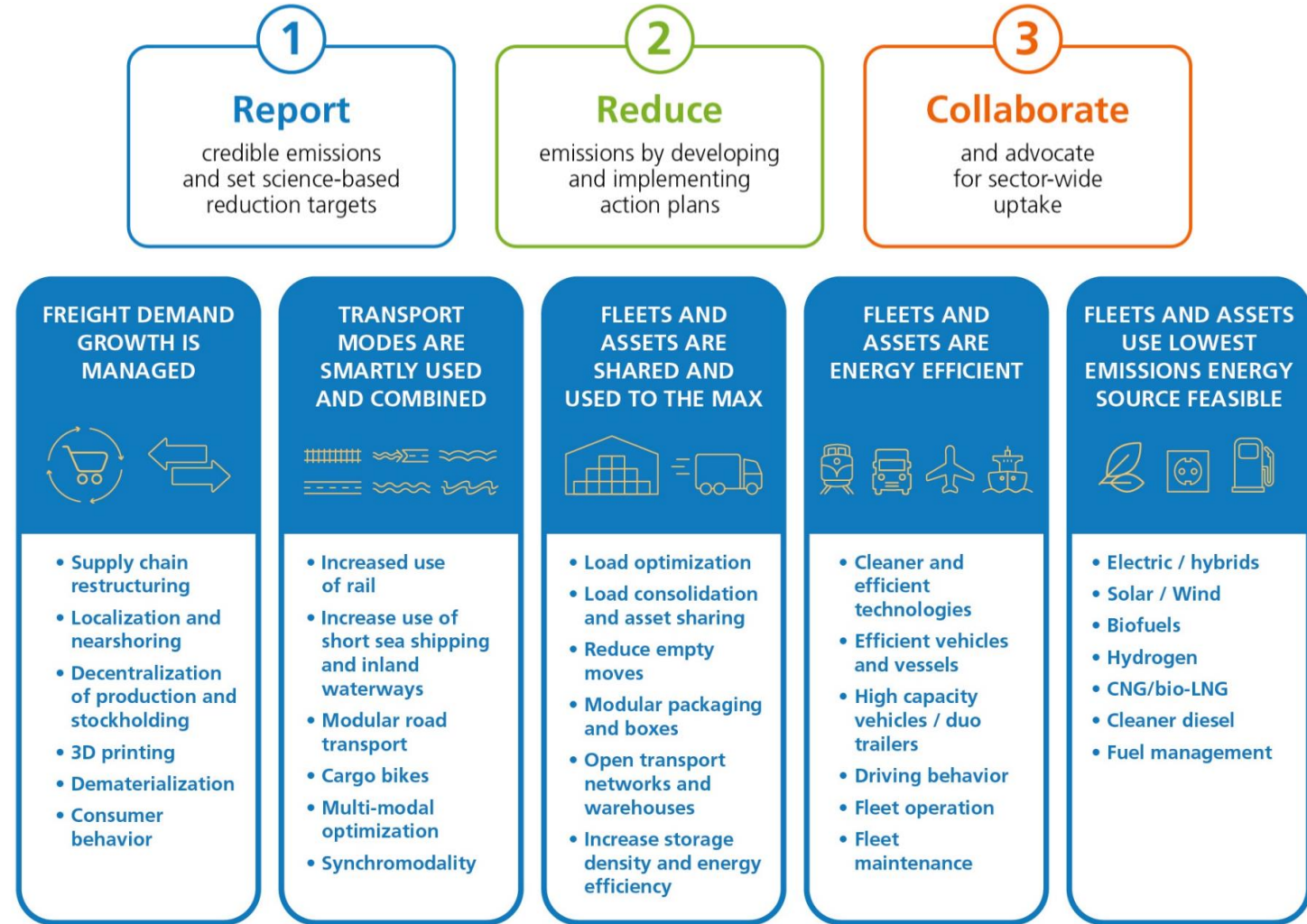
Alliance for Logistics Innovation through Collaboration in Europe



alice | Alliance for Logistics Innovation through Collaboration in Europe



[Link to the document](#)

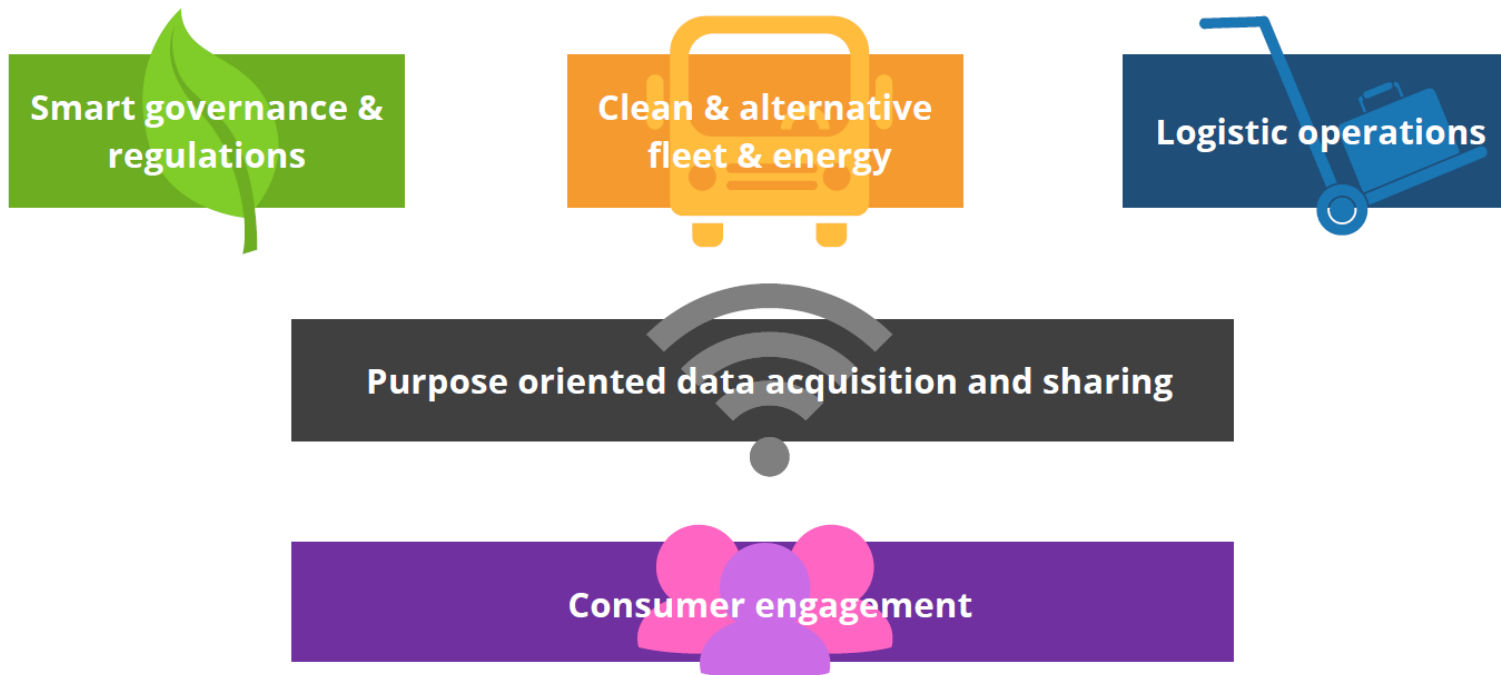
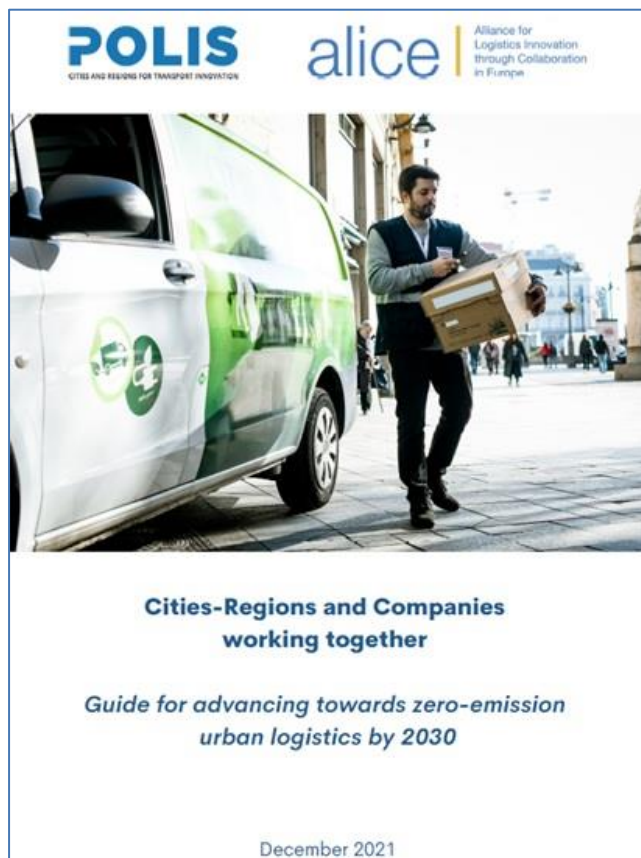


© Smart Freight Centre and ALICE-ETP based on A. McKinnon 'Decarbonizing Logistics' (2018) Roadmap Towards Zero Emissions Logistics 2050. ALICE (2019) www.etp-alice.eu

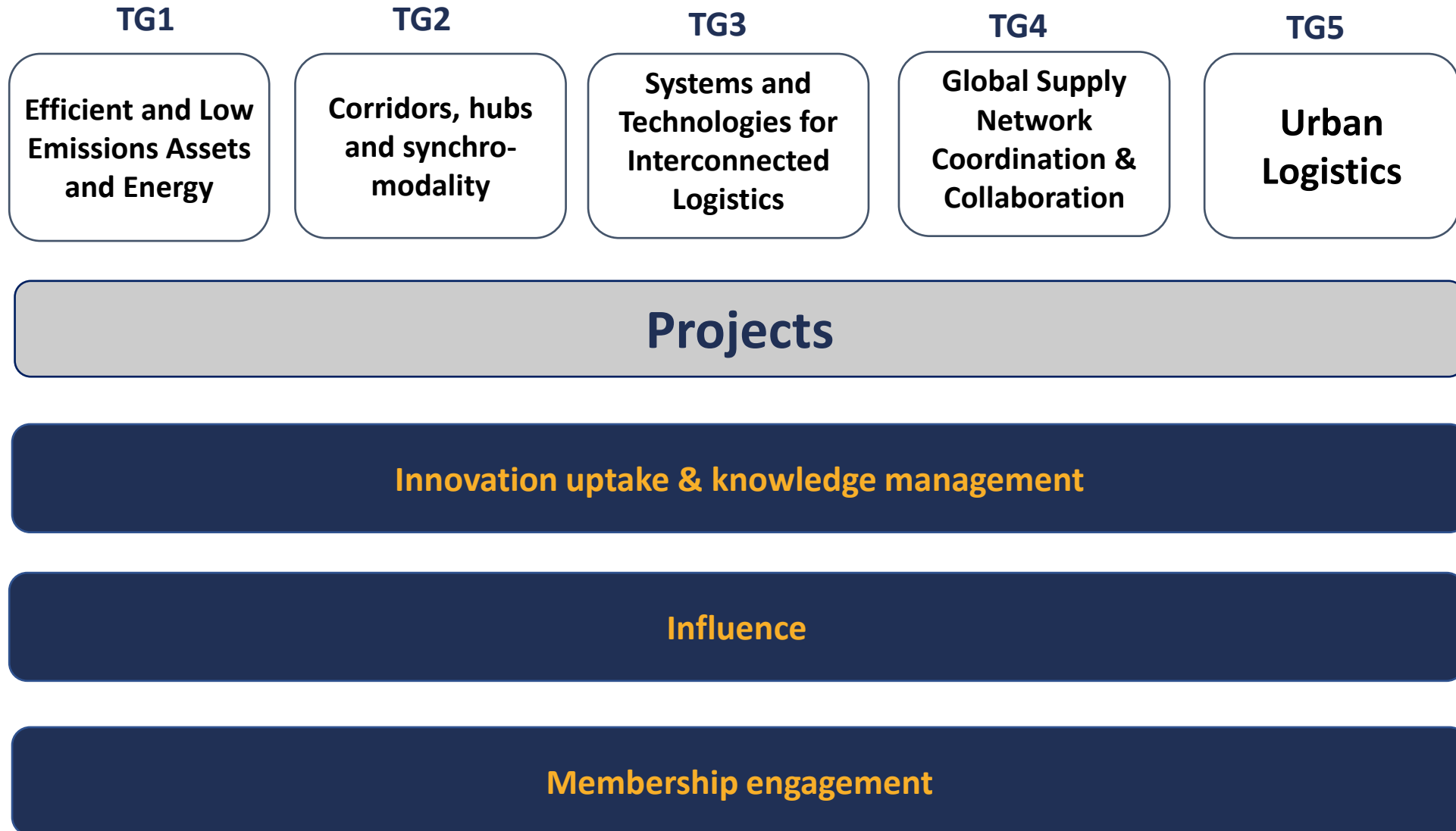
Additional focus needed

Current focus

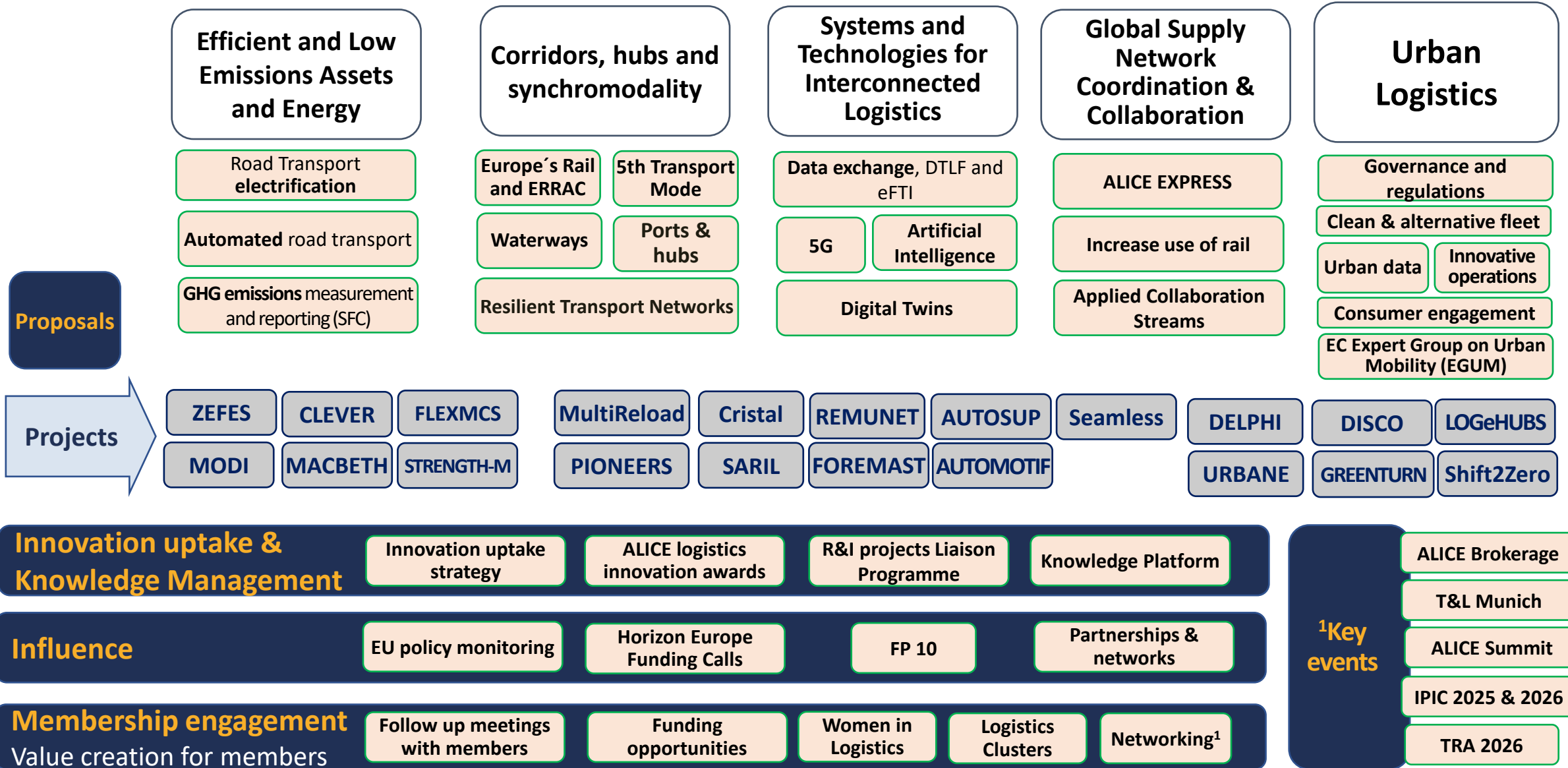
To ensure affordability in assets and energy transitions



Work plan 2025 / Programmes structure



Programmes, activity fields and projects



The TEAM

MEMBER OF THE BOARD

CHAIR AND VICE-CHAIRS

MEMBER OF THE BOARD



Paola Cossu
CEO



Sergio Barbarino
Senior Director
Research Fellow



Francois Regis Le Tourneau
Vice President Corporate
Responsibility



Andrea Condotta
Public affairs, Sustainability
& Innovation Director



Cristina Martin Lorenzo
CEO



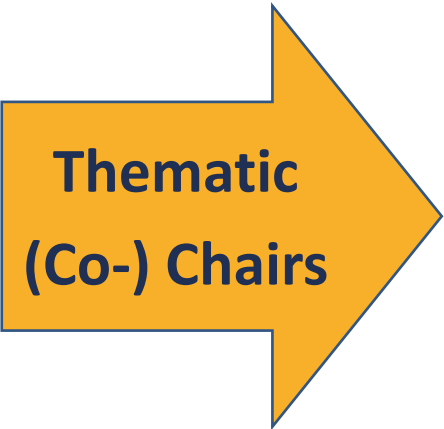
Efficient and Low Emissions Assets and Energy

Corridors, hubs and synchro-modality

Systems and Technologies for Interconnected Logistics

Global Supply Network Coordination & Collaboration

Urban Logistics



Pascal Van Wallendael
Lead transport expertise



Salvador Furió
Deputy Director
Innovation



Lars Deiterding
Executive Director



Angelos Amditis
Research and Development
Director



Marianna Levto
Head of Network and
Advocacy



Michael Archer
Strategy Development
Director, Europe



Johan Leveque
Director of R&D



Hans Schurmans
Director of Logistic
Operations



ALICE Thematic Groups Chairs & Vice-Chairs

alice

Alliance for
Logistics Innovation
through Collaboration
in Europe

Efficient and Low Emissions Assets and Energy



Pascal
Van Wallendael



Alain
Baeyens



Lóri
Tavasszy



Tharsis
Teoh



John
Smith



Zeljko
Jeftic



Corridors, hubs and synchro-modality



Salvador
Furió



Lars
Deiterding



Kris
Neyens



Zisis
Palaskas



Systems and Technologies for Interconnected Logistics



Marianna
Levtova



Jon
Kuiper



David
Ciprés



Anike
Murrenhoff



Giannis
Kanellopoulos



Global Supply Network Coordination & Collaboration



Michael
Archer



Bas
van Bree



Jan
Tore P.



Jannicke
Baalsrud



Serge
Schamschula



Johan
Leveque



Pierre
Fils



Hans
Schurmans



Elisabeth
Hörnfeldt



The TEAM: ALICE Secretariat

alice

Alliance for
Logistics Innovation
through Collaboration
in Europe



Fernando Liesa
Secretary
General



Dirk 't Hooft
Director Finance
& Legal



Indrek Ilves
Director IT



Mar Vicente
ALICE Secretariat
Support &
ZLC Research
Office Assistant



Yanying Li
Head of Programmes
and Knowledge
Management



**Giuseppe
Luppino**
Programme
Manager



**Stefanie Van
Damme**
Deputy Programme
Manager &
Technical Expert



Yuliya Sahitava
Senior
Communication &
Project Manager



Andreea Calin
Senior Innovation
Manager



Nick Delmeire
Senior expert



Elvina Nowak
Project
Manager



Pablo Segura
Junior Project
Manager



Marion Cottet
Project Manager



**Tomasz
Dowgielewicz**
Project Manager



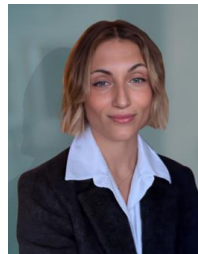
Máximo Martínez
Project & members
support



Laura Mata
Policy Monitoring
and Project
Support



Angjelo Andoni
Project Manager



Alice Scotti
Project
Manager



ALICE value for members

Shared vision to build an innovation eco-systems to accelerate affordable transition towards zero emissions logistics & supply chains

European **competences** and capabilities in innovation and sustainable Logistics

Strong **knowledge management**: Member's initiatives & 60+ R&I projects

Finding the **right people to collaborate**: Sustainability, Innovation and Public Affairs functions enable different discussions than procurement (supplier-customer)

ALICE is the **link to the EC** freight transport and logistics innovation and funding program and can influence EU policies

ALICE is the platform to **brainstorm, network, share new ideas** and support companies in their implementation

Why becoming an ALICE members/benefits

Become an active Member of the European logistics innovation ecosystem:

- Propose solutions/challenges & get to know your peers in 5 [Thematic Groups](#), including 20+ [Activity Fields](#) and in 16+ running [projects](#).

Collaborative network and funding for R&I collaborative projects:

- Join a [network](#) involving industry, academia, and public institutions.

Lead and witness cutting-edge innovations:

- Make your needs, competences and interests known to other innovators in logistics and supply chain management. Get exposure to cutting-edge innovations.

Influence EU R&I programmes:

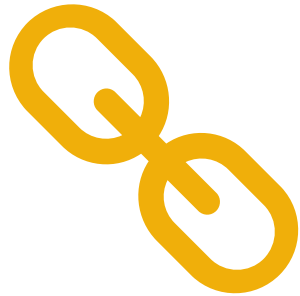
- Support and assist the European Commission in defining impactful EU co-funded programmes like Horizon 2020 and [Horizon Europe](#)

Regulatory development:

- Have a role in developing regulatory requirements needed for innovation implementation and receive latest Policy Developments through our [Policy Monitor](#)

- ✓ Participate in **collaborative R&I [EU funded projects](#)** and 1to1 collaborations.
- ✓ Access to the **ALICE Knowledge Hub** with over [100+ projects](#)
- ✓ Participate in ALICE **40+ online and 3-4 in-person [events/webinars](#)** per year.
- ✓ Networking opportunities with **700+ Supply Chain and Logistics experts**.
- ✓ Get updates on 20+ relevant **EU policies**.
- ✓ Regular **e-mail updates** on ALICE activities.
- ✓ Dedicated **follow up meetings**. Receive briefings and exchange on topics of your interest part of the scope of ALICE.

How to become member of ALICE ?



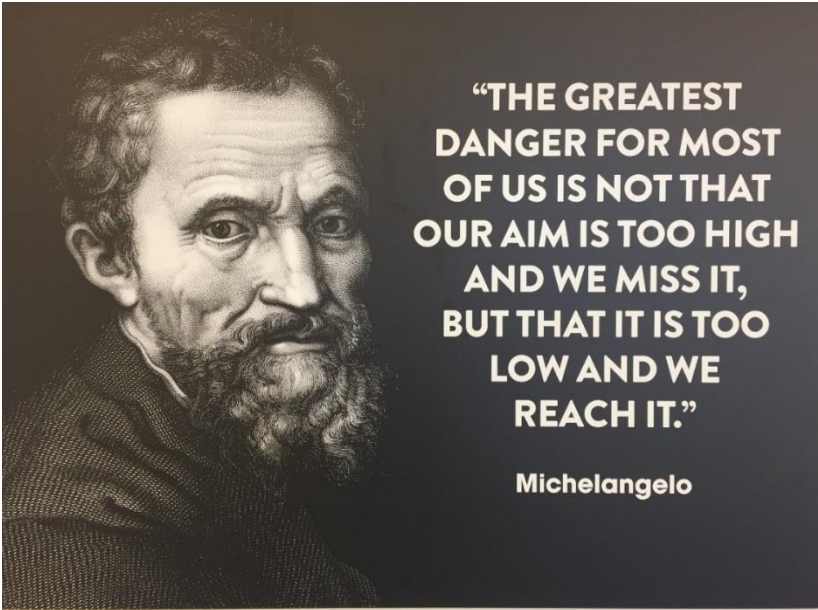
Link to website

<https://www.etp-logistics.eu/how-to-join/>



Application form download:

[Link](#)



Thank you!

The Best Way To Predict The Future Is To Co-Create It!

If you want to go fast, go alone If you want to go far, go together



www.etp-alice.eu
info@etp-alice.eu

